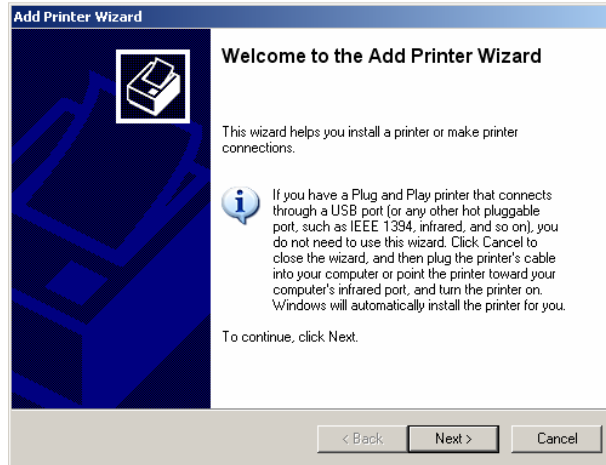
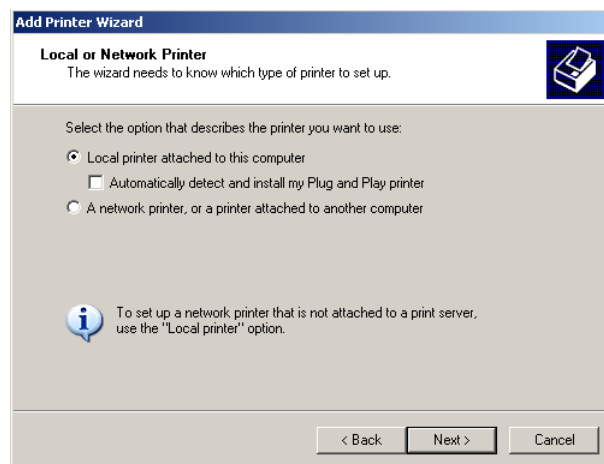


How to install Verifone receipt print in Windows 2000/XP

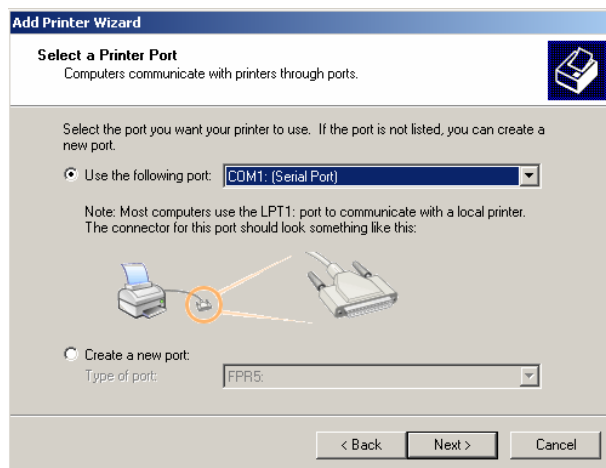
1. Connect your Verifone 250 (enScribe 612) to COM port with data cable
2. Go to Start->Settings-> Control Panel -> Printers and Faxes ->Add printer



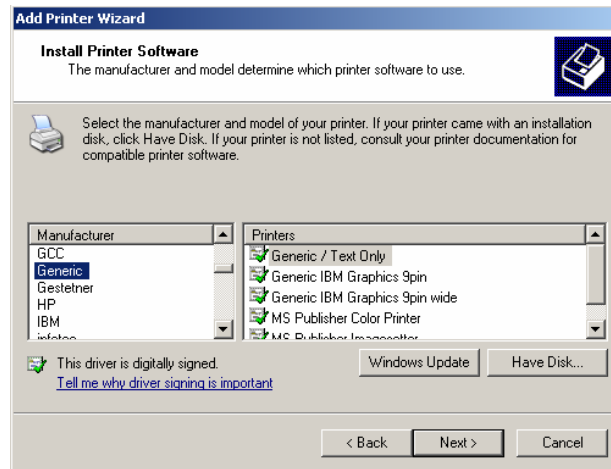
3. In the dialog window click **Next**



4. Chose **Local printer** option and uncheck **automatic detecting**, click **Next**



5. Chose COM port that has been connected to Verifone 250, click **Next**

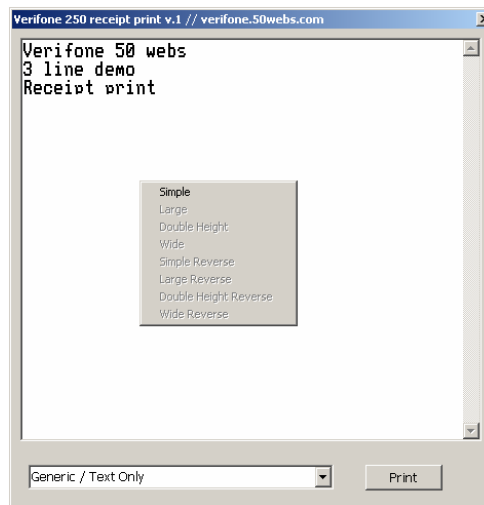


6. Chose **Generic/Text only** printer and click **Next**

7. Finish installation with options as you wish, do not print test page.

8. Install font from Verifone receipt print package. (Copy **ver_norm.fon** to folder C:/Windows/Fonts/)

9. Power on your printer and run Verifone receipt print. Enjoy.



Tip: You can change font via context menu (right click on form)